

## Social Tenure Domain Model A Pro-Poor Land Information System



*'Secure Land and Property Rights for All'*



## The Global Land Challenges

- **Only 30 % cadastral coverage** (versus 70% tenures off register) – *Need to secure tenure ASAP to all citizens.*
- **Only 2-3% ownership by women** – *how to increase?*
- Dealing with the **affordability issue**: *how to modernise systems in a pro-poor way?*
- **Complexity of land rights, claims, and records**: *Need to have new forms of land administration and records systems.*

**Key Challenge** for Policy Makers and Land Administrators:

*How to support various tenure types & systems to enable land reform and secure land and property rights for all?*



## Outline of Presentation

- Land Challenges and GLTN
- Why *STDM*? What is *STDM*?
- Involved Partners
- *STDM* Pilot in Uganda – Initial Results
- Key Lessons
- Next Steps

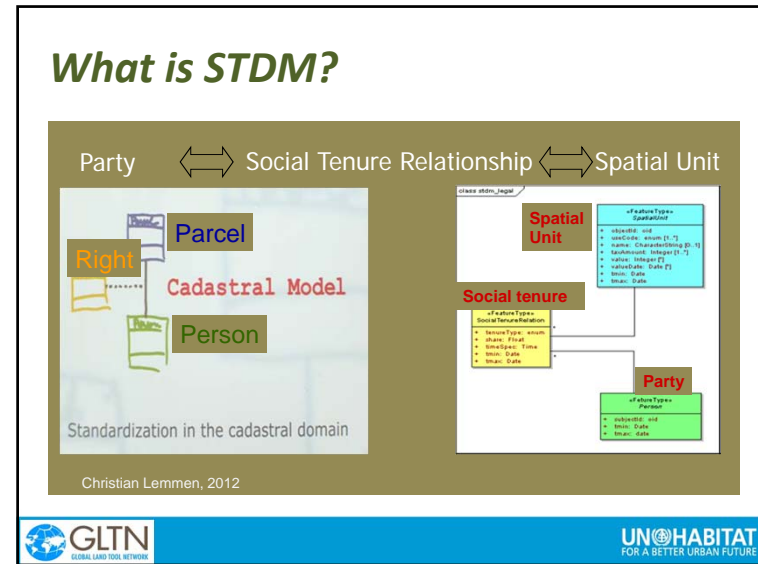
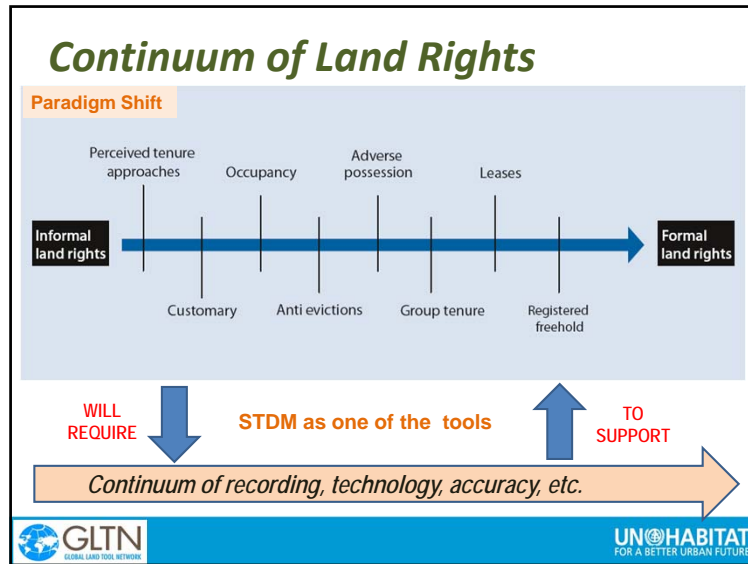


## The Global Land Tool Network was established to address these challenges!



- Coalition of **50** international partners
- Focuses on security of tenure and development of land tools
- Promotes good land governance and **continuum of land rights**






- ### Why STDM?
- It can facilitate the recording of **all forms of land rights and claims** (e.g. slums, customary, overlaps, etc.)
  - Based on open and free software packages – **It is affordable and scaleable**
  - Based on global standard – **It can be shared**
  - Can complement other tools and can be used for different purposes and context – **It is flexible and multi-purpose**
  - Will not require highly skilled professionals to operate – **It is simple to use**
  - **Promotes equity, participation, transparency, efficiency, sustainability and affordability**
- GLTN GLOBAL LAND TOOL NETWORK UN HABITAT FOR A BETTER URBAN FUTURE

- ### Involved Partners
- Development Partners:**
- International Institute for Geo-Information
  - International Federation of Surveyors (FIG)
  - Land professionals
  - UN-Habitat
  - Sida, Norway
- Implementation Partners:**
- World Bank (rural areas in Ethiopia)
  - Slum Dwellers International (slums in Uganda)
  - National and local authorities (Uganda)
  - Cities Alliance
  - Pamoja Trust/ Ministry of Housing – Kenya
  - Mount Kenya Project
- 
- GLTN GLOBAL LAND TOOL NETWORK UN HABITAT FOR A BETTER URBAN FUTURE

### STDM Pilot in Uganda – Initial Results

**OBJECTIVES:**


1. To address the land information requirements of the urban poor
2. To build capacity in the use and application of land information systems
3. To create dialogues between communities & authorities



**GLTN**  
GLOBAL LAND TOOL NETWORK

**UN HABITAT**  
FOR A BETTER URBAN FUTURE

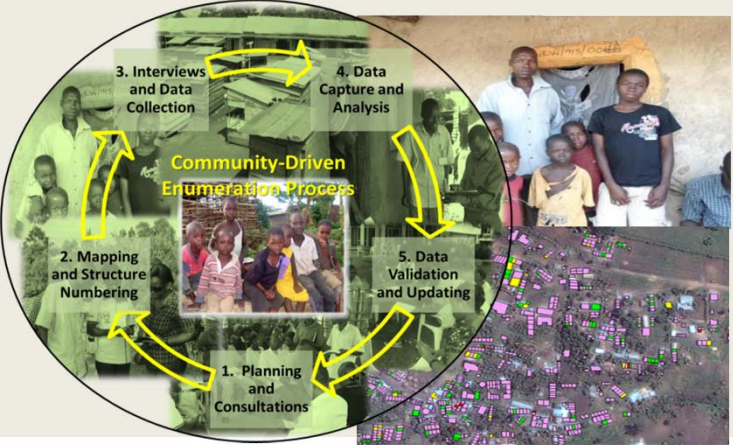
### Initial Results



**GLTN**  
GLOBAL LAND TOOL NETWORK

**UN HABITAT**  
FOR A BETTER URBAN FUTURE

### The Inclusive Process



**GLTN**  
GLOBAL LAND TOOL NETWORK

**UN HABITAT**  
FOR A BETTER URBAN FUTURE

### Priority Community Projects

Bufumbo		Mission	
Project	Numbers	Project	Numbers
Electricity	38	Electricity	217
Garbage Disposal	20	Water	112
Water	17	Health Centre	108
Road and Drainage	17		

Combined	
Project	Numbers
Electricity	256
Water	129
Health Centre	109

**GLTN**  
GLOBAL LAND TOOL NETWORK

**UN HABITAT**  
FOR A BETTER URBAN FUTURE

### Tenure Information

1. How many are structure owners, tenants and have other tenure status? And where are they?

Legend  
 Structure owners  
 Tenants  
 Relative of owners  
 Others  
 Mission boundary  
 Mobile Image

### Next Steps

- Continue capacity development and technical assistance to Uganda
- Continue dialogue with SDI and Cities Alliance on up-scaling
- STDM implementation in Kenya (Mt. Kenya, Pamoja Trust)
- Explore opportunities for STDM within UN-Habitat (e.g. DRC, Haiti, etc.)
- STDM further testing and implementation in other context (e.g. customary, planning, climate change, slum upgrading, safety monitoring, etc.)
- Further improvement of STDM (e.g. FIG review, feedback from users, etc.)

### Key Lessons

- **Partnership** is important for STDM implementation
- STDM – from concept to **implementation**; it is **technically sound, has multiple usage and simple to use**
- Combination of pro-poor land tools and approaches is **doable, effective and useful**
- **Ownership** of the process and organizational capacity of the community and authorities are important
- **Capacity development** is a catalyst for sustainability; experience opens up scaling up **opportunities**
- Pro-poor solutions have **huge potential** to impact on the lives of the poor

## Thank you for your attention!

**Social Tenure Domain Model**  
 A Pro-Poor Land Information System

*'Secure Land and Property Rights for All'*